



Nature | Education

**GET TO KNOW**  
CONNECT • CREATE • CELEBRATE

**GRAB N' GO ACTIVITY:**  
**Parts of a Flower**

### OVERVIEW:

The first step to learning about pollinators is to understand the different parts of a flower, and how flowering plants reproduce.

### MATERIALS:

- 'Introducing Parts of a Flower' worksheet
- Drawing supplies

### PROCEDURE:

Flowering plants and their pollinators have a very special relationship. To understand how pollinators interact with the different parts of flowering plants, have the youth fill out the 'Parts of a Flower' worksheet and learn the vocabulary. Ask them to personalize their flower by colouring it.



Submit your work to the Get to Know Contest for a chance to win wild prizes & go to

**GETTOKNOW.CA**

to find more free resources and activities

### Additional Activity Resource

[www.sciencekids.co.nz/gamesactivities/lifecycles.html](http://www.sciencekids.co.nz/gamesactivities/lifecycles.html)

**Ages:** All Ages

**Time:** 10 - 15 minutes

### VOCABULARY:

**Pollen:** The fine, granular powder produced by certain plants that makes seeds when combined with a flower's egg (ovule).

**Stamen:** The 'male part' of a flower which makes filament. It is composed of the:

**Filament** - The long stalk of a stamen

**Anther** - Part of the stamen that contains pollen

**Pistil:** The 'female part' of a flower it is composed of one or more carpels.

**Carpel:** One of the female reproductive organs of the flower. It is composed of the following:

**Stigma** - The sticky part of a flower that receives pollen during pollination

**Style** - Stalk that connects the stigma to ovary

**Ovary** - The lower part of the carpel in which seeds form

**Ovules** - The structure that develops into a seed after fertilization.

**Stem:** The long above-ground stalk of a plant which supports its seed-carrying parts.

**Sepals:** The leaf-like parts that protects a flower bud

**Petals:** The colourful parts that surround the flower's reproductive structure.

**Nectar:** The sweet liquid found in many flowers which pollinators love to eat!

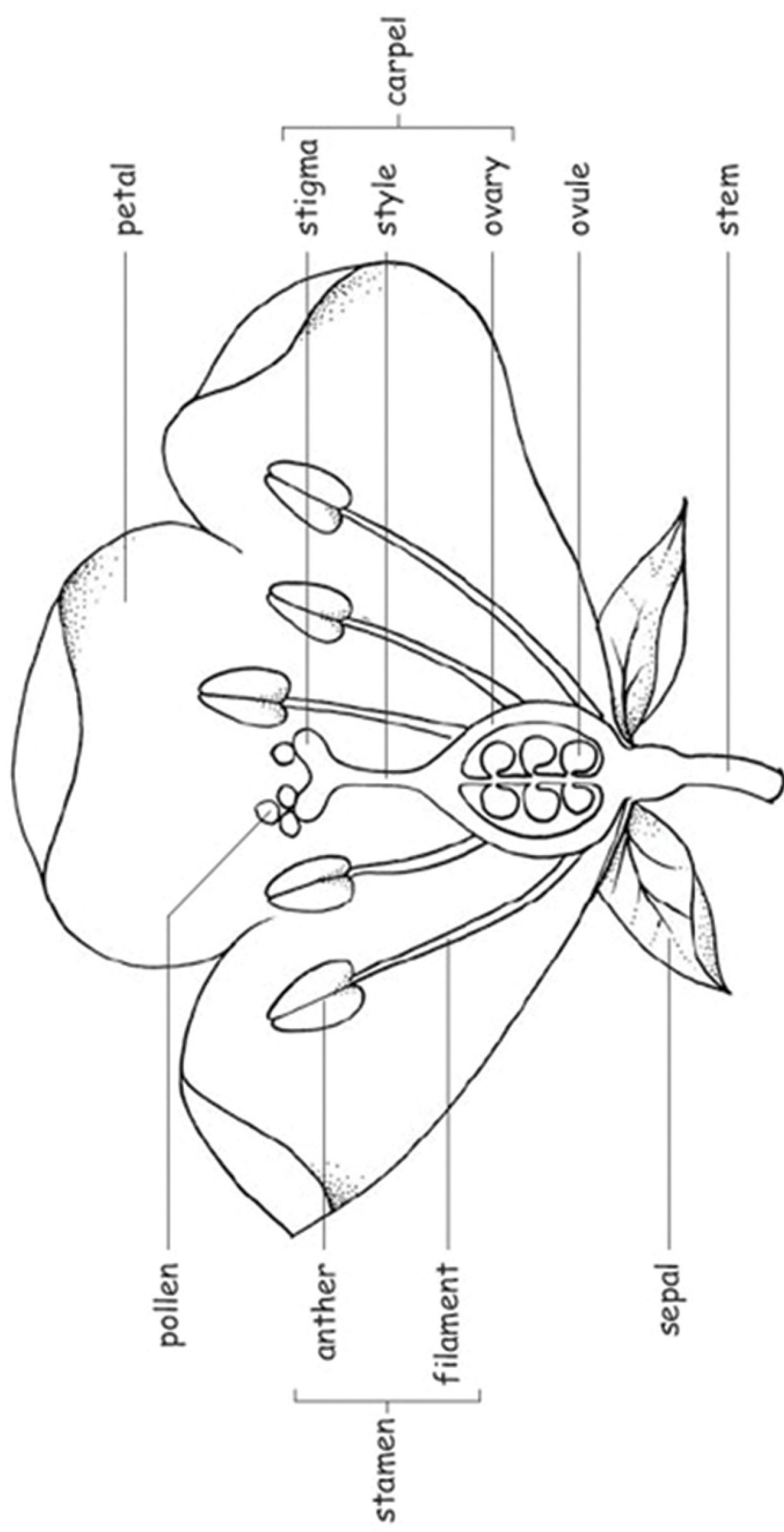
**Pollination:** The movement of pollen from a stamen to a pistil.

**Pollinator:** An animal that carries pollen from the male parts of the flowers to the female parts of another flower.



## GRAB N' GO ACTIVITY:

### Parts of a Flower Teacher Worksheet





Nature | Education

# GET TO KNOW

CONNECT • CREATE • CELEBRATE

## GRAB N' GO ACTIVITY:

### Parts of a Flower Student Worksheet

